

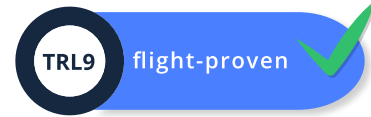


# L-Band Splitter

for CubeSat nanosatellites applications

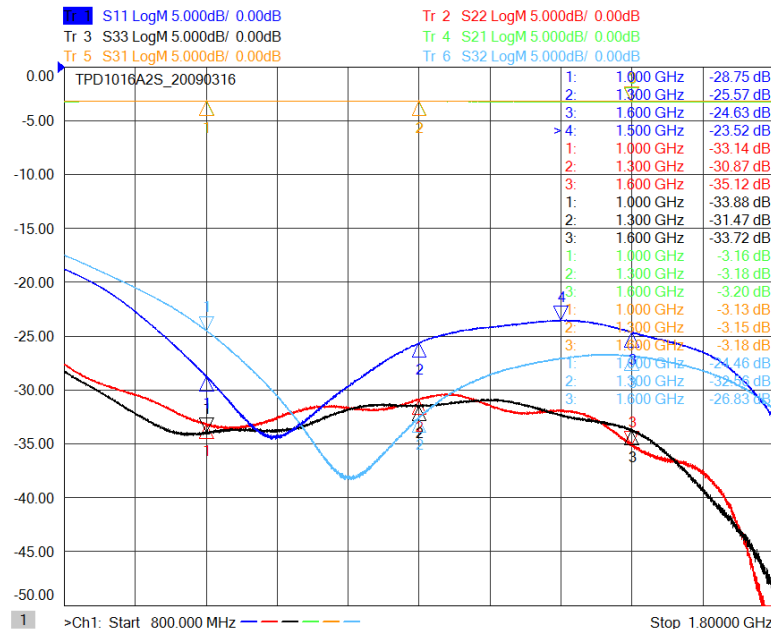
## ABOUT

WiRan Power Dividers allow for easy splitting of RF power into two channels, providing excellent phase & amplitude balance, low Insertion Loss and VSWR factors and high isolation between channels.



## FEATURES

- compliant with the CubeSat nanosatellite standard
- small dimensions, perfect for compact satellites
- alodine coated lightweight aluminum housing
- wide operational temperature range



**S parameters** available on request

**WiRan sp. z o.o.**

Pomieranian Science and Technology Park, Al. Zwycięstwa 96/98

81-451 Gdynia, Poland

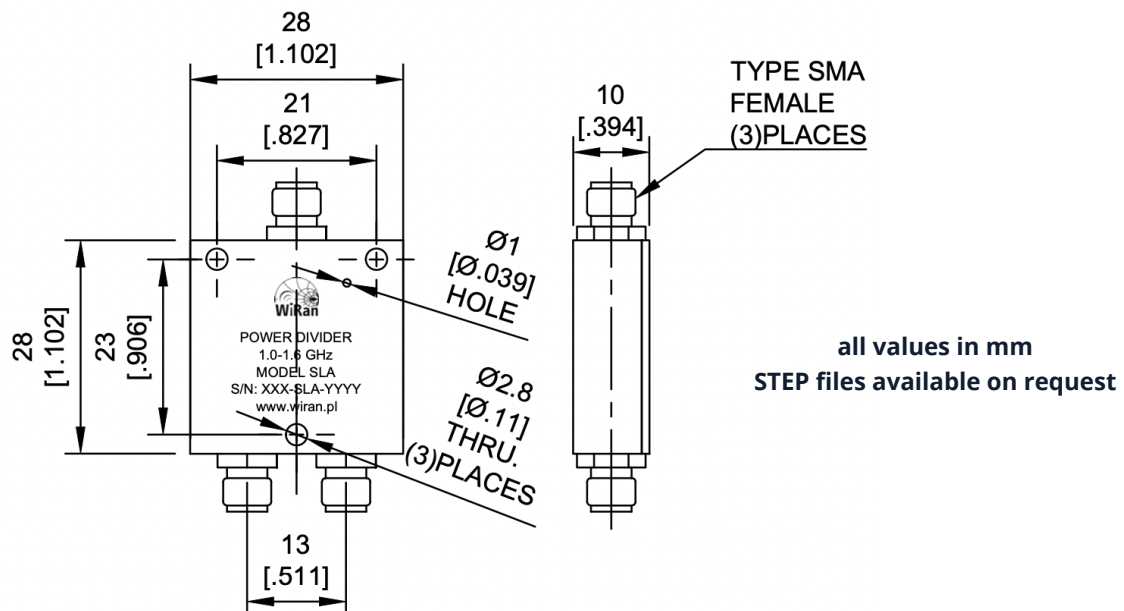
+48 58 663 10 10

wiran.pl, info@wiran.pl

# L-Band Splitter

for CubeSat nanosatellites applications

<b>Frequency Range</b>	1-1.6 GHz
<b>Insertion Loss</b>	≤0.35dB (Above 3.01dB Split)
<b>VSWR</b>	Input ≤1.20:1 Output ≤1.15:1
<b>Isolation</b>	≥22dB
<b>Amplitude Balance</b>	≤±0.2dB
<b>Phase Balance</b>	≤±2°
<b>Power Handling</b>	Forward ≤10Watt; Reversed ≤5Watt
<b>Operating Temperature</b>	-55 ÷ +85 °C
<b>Weight</b>	20g
<b>Impedance</b>	50Ω
<b>Port Connectors</b>	SMA-Female



Ordering code	Description
SLA	L band splitter 1000-1600MHz, CubeSat compatible